

# IGS

3000-10000



ISO 11901-1

VDI 3003

This gas spring series includes the models compliant with automotive standards / Bu sayfadaki gazlı yaylar aşağıdaki otomotiv standartlarını karşılamaktadır

<b>BMW</b>	B2 4006	<b>Nissan</b>	K 32 S
<b>FCA</b>	075.90.55	<b>PSA</b>	E24.54.815.G
<b>Ford</b>	W-DX35-6203	<b>Renault</b>	EM24.54.700
<b>Mazda</b>	PG23D	<b>Suzuki</b>	SES-K 5404e
<b>MB</b>	B8 3180 220 000 001	<b>VW</b>	39D 878

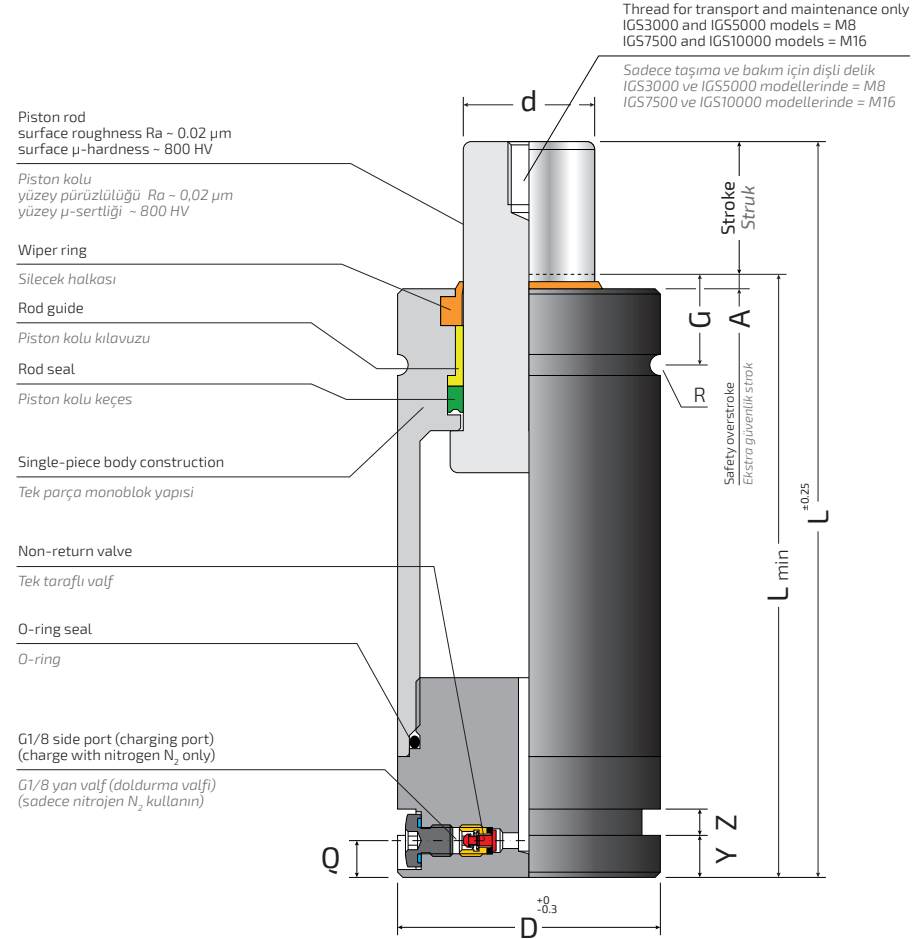
COMPACT POWER   
COMPACT HEIGHT



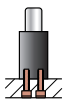
**Technical notes / Teknik notlar**  
Important use instructions in the dedicated catalogue section.  
Önemli kullanım talimatları özel katalog bölümünde.

IGS series nitrogen gas springs feature standard dimensions and forces, as well as several fixing and linking possibilities. With the IGS series nitrogen gas springs, Bordignon now ensures a great interchangeability and a superior reliability. IGS series nitrogen gas springs are self-lubricated.

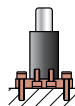
IGS serisi nitrojen gazlı yaylar, standart boyutlar ve kuvvetlerin yanı sıra çeşitli sabitleme ve bağlantı olanaklarına sahiptir. IGS serisi gazlı yaylar ile Bordignon artık mükemmel bir değiştirilebilirlik ve üstün bir güvenilirlik sağlıyor. IGS serisi nitrojen gazlı yaylar kendinden yağlamalıdır.



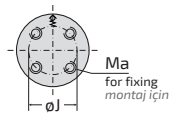
### Fixing possibilities / Montaj olasılıkları



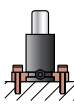
at the base  
with screws  
alt taraftan  
vidalar ile



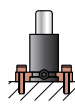
with base-plate  
montaj plakası ile  
**BF, BFA, BFB**



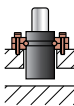
**IGS3000, IGS5000,  
IGS7500, IGS10000**



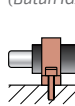
with half-flanges  
yarım flanşlar ile  
**SF, SFA**



with foot brackets  
montaj braketleri ile  
**ST, STA**  
(Not for all IGS models)  
(Bütün IGS modeller için değil)



with collar flange  
yaka flanş ile  
**FL, FLQ**

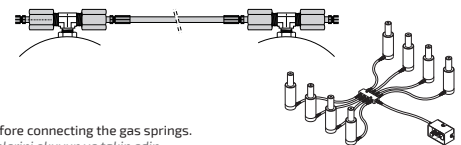


with front support  
ön destek ile  
**FT, FTA**  
(Not for all IGS models)  
(Bütün IGS modeller için değil)

### GAS SPRING BASE / GAZLI YAY TABANI

### LINKING TO OPEN SYSTEM / BAĞLANTILI SİSTEMLER

	IGS3000-IGS10000 (G1/8 side port / G1/8 yan valf)		
Hoses Hortumlar	ATM	ATN	AT
Gas spring-hose fittings Gazlı yay - hortum montajları	ARM	ARN	AR



**ATTENTION!** Follow the instructions in the "LINKED SYSTEM" section before connecting the gas springs.  
DİKKAT! Gazlı yayları bağlamadan önce mutlaka "seri bağlantı" yönergelerini okuyun ve takip edin.

### SAFETY PROTECTIONS / GÜVENLİK TEDBİRLERİ



UNCONTROLLED  
RETURN SPEED /  
KONTROLSUZ GERİ DÖNÜŞ



OVERSTROKE /  
AŞIRI STROK



OVERPRESSURE /  
AŞIRI BASINÇ



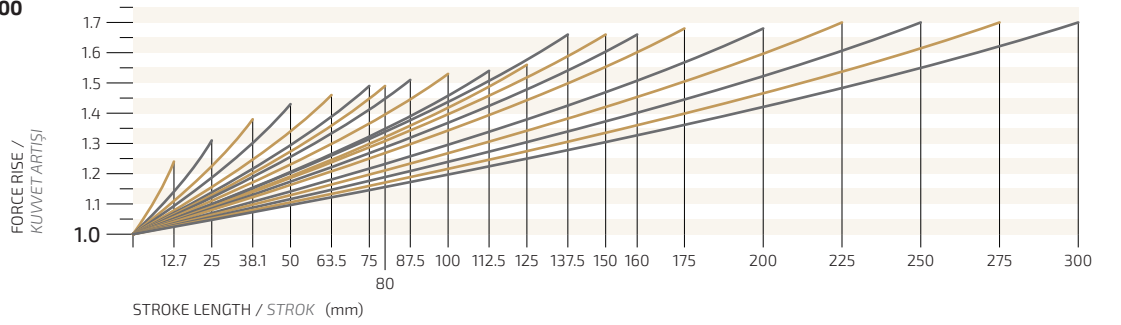
## FORCE RISE VS. USED STROKE LENGTH CHARTS

## SAĞLANAN KUVVET / KULLANILAN STROK GRAFİKLERİ

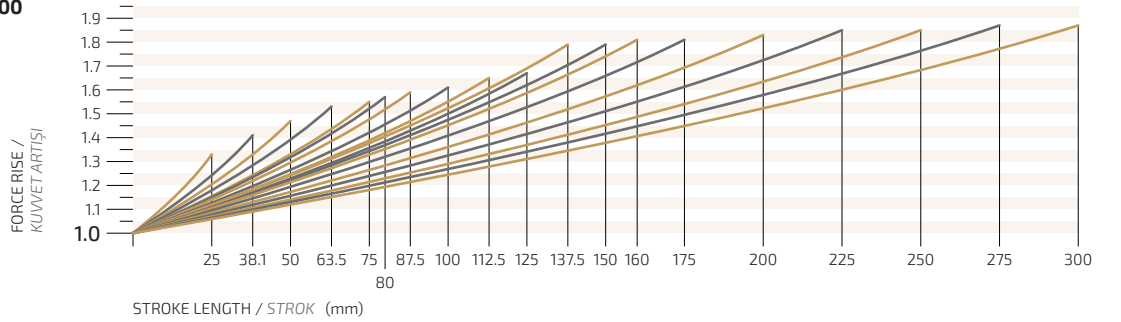
The force curves in the charts below are obtained from reference values measured in static conditions. The actual forces generated under use conditions may vary, since they depend on the specific parameters of the application, such as the working speed (cycles per minute).

Aşağıdaki tablolarda yer alan kuvvet eğrileri, statik koşullarda ölçülen referans değerlerden elde edilmiştir. Kullanım koşulları altında üretilen gerçek kuvvetler, çalışma hızı (çevrim/dakika) gibi uygulamanın özel parametrelerine bağlı olduklarından değişiklik gösterebilir.

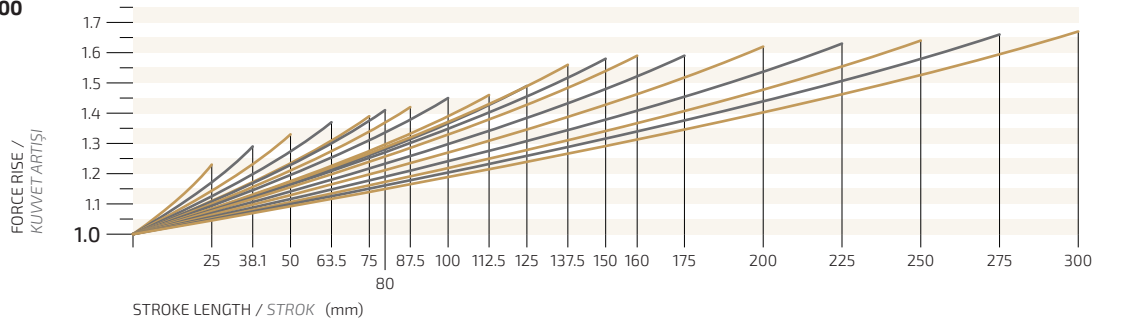
### IGS3000



### IGS5000



### IGS7500



### IGS10000

